

Professional Road Lighting Solution Provider

Providing superior, cost-effective, and reliable road lighting solutions



Best Road Lighting Supplier

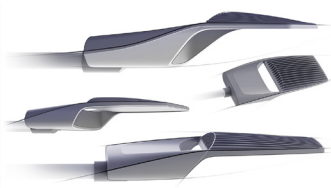
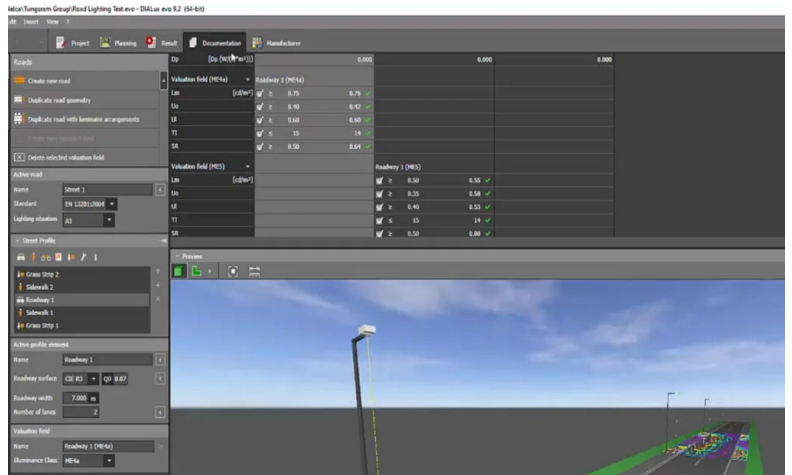
9 years of experience in road lighting project.

23 years of expertise in lighting manufacture.

Hundreds of optics support by professional optical engineers team.

Global quality standards with CE, RoHS, CB, ENEC, ENEC+ certifications.

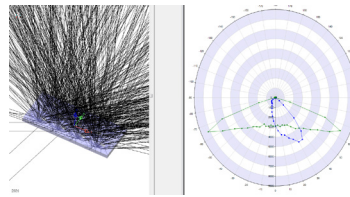
Serving overseas customers in 70 countries.



Product Design



Global Certification



Optical Design



Smart control systems

About Us

Aimlux is dedicated to providing superior, cost-effective, and reliable road lighting solutions, customized to meet customers' needs.

We boast specialized and highly experienced teams dedicated to bid study, product match, lighting simulation, bid document submission, and sample provision to support your projects comprehensively.

Comprehensive technical support and services

At Aimlux, we boast specialized and highly experienced teams dedicated to bid study, product match, lighting simulation, bid document submission, and sample provision to support your projects comprehensively.

Additionally, we have established Aim Optics System with leading optic suppliers, provide hundreds type of optics lens for each product. We also provide customized optics to meet specific project requirements.

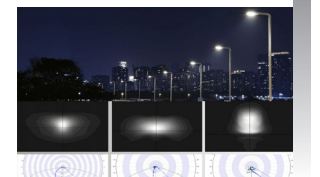
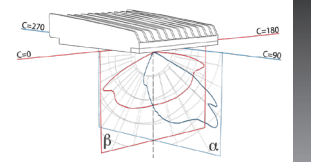
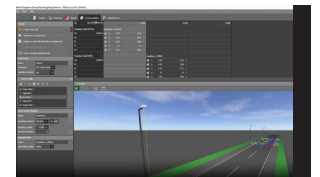
With Aimlux, you can expect dedicated expertise and tailored solutions to enhance the success of your lighting projects.

Factory & Product Certifications Quality Assurance

At Aimlux, our road lighting products are backed by extensive certifications and test reports, including IP, IK, CE, RoHS, CB, ENEC, IEC62471, LM80, LM79, and more. These certifications ensure that our products meet stringent quality and safety standards.

We have a deep partnership with TÜV certification authority, enabling us to quickly provide certification services or support when you need specific certifications for your projects.

Aimlux is committed to delivering certified and high-quality road lighting solutions tailored to your requirements.



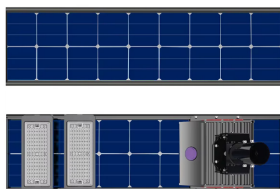


AL-SSB1 is an all-in-one solar street light with independently tiltable LED modules and double-sided solar panels, boosting energy generation by 25% compared to same-size panels. Engineered for road and area applications, it ensures optimal solar capture, precise illumination, exceptional durability, and easy installation, delivering unmatched performance.

Product Features

- High luminous efficacy > 200 lm/W
- High-performance LiFePO4 battery with 5000 cycles at 50% DOD and over 10 years of lifespan, operating from -40°C to 65°C.
- Professional road optical lens controls light for precise and effective illumination, improving lighting efficiency by 35%.
- Double-sided solar panels increase energy generation by 25% compared to same-size single-sided panels.
- Adjustable solar panels and LED modules ensure precise illumination and optimal solar energy capture.

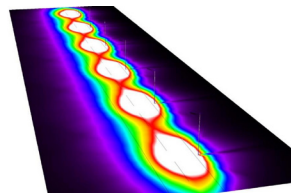
Design Highlights



Double-sided solar panel



Adjustable solar panels and LED modules



Professional road optical lens



Smart Control System

Application



ROADS & MOTORWAYS



URBAN & RESIDENTIAL STREET'S



BIKE & PEDESTRIAN PATHS



BRIDGES



CAR PARKS



SQUARES PEDESTRIAN AREAS



RAILWAY STATIONS METROS

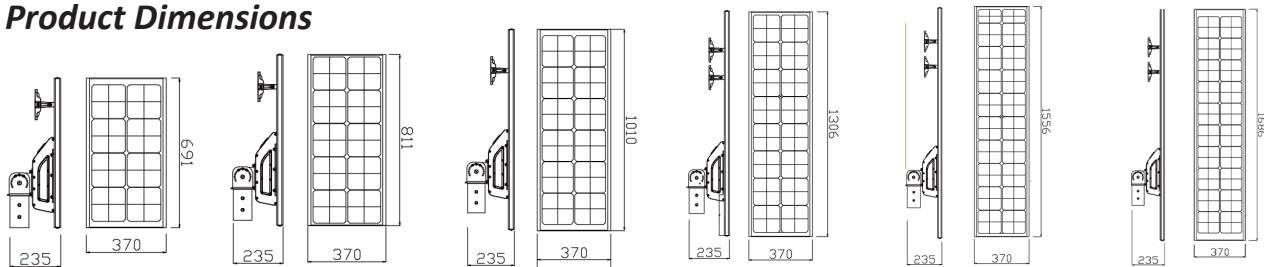
Technical Parameters

| General | |
|---------------------|---|
| Working Temperature | Temp:-40℃ -+65℃ Humidity:10%-95% |
| Working time | 4-6 Days |
| Protect Grade | IP66/ IK08 |
| Electrical class | Class III EU |
| Materials | Aluminium+PC |
| Finish | Polyester powder coating |
| Color | RAL 9005 |
| Lifetime expectancy | 10 Years |
| Warranty | 5 Years |
| Control | PIR Sensor(Optional) Microwave senser(Optional) Zhaga socket (Optional) |

| LED Module | |
|----------------------------------|------------------|
| Optic | Type-II/Type-III |
| LED colour temperature | 2200K-6500K |
| CRI | > 70/ > 80 |
| Lifetime of the LEDs @TA 25°C | 100,000h- L95 |

| Solar Panel | |
|---------------------------------------|--------------------------------|
| Technology | Monocrystalline silicon cells |
| Power(Wh) | 40/50/80/95/105/105/105 |
| Short Circuit Current: | 6.67A |
| Max operating Voltage: | 21.6V |
| Lifetime expectancy | 25 years |
| Battery | |
| Technology | LiFePo4 |
| Voltage | 12.8V |
| Capacity(Ah) | 45/60/75/90/120/130 |
| Operating temperature | -40°C to 65°C -40°F to 149°F |
| Matterial box | Aluminium |
| Battery charging & discharging cycles | 5000 Cycles @ 50% DOD |
| Lifetime expectancy | >10 years |
| Charge controller type | MPPT |

Product Dimensions



| Family | Power (W) | Lumens (Lm) | Product Size(mm) | Packing Size(mm) | NW (Kg) | GW (Kg) | 20GP (Pcs) | 40GP (Pcs) |
|----------|-----------|-------------|------------------|------------------|---------|---------|------------|------------|
| AL-SS-B1 | 40 | 8000 | 691*370*235 | 730*390*200 | 11.8 | 12.7 | 464 | 1201 |
| | 80 | 16000 | 811*370*235 | 850*390*200 | 12.7 | 13.5 | 399 | 1031 |
| | 100 | 20000 | 1010*361*209 | 1306*370*236 | 13.5 | 14.5 | 323 | 835 |
| | 120 | 24000 | 1556*370*235 | 1556*370*235 | 15.8 | 17 | 251 | 649 |
| | 150 | 30000 | 1556*370*235 | 1600*390*200 | 17.5 | 19 | 212 | 548 |



Remote Control



PIR Sensor



Microwave sensor



Zhaga socket

Global Quality Standard

Our factory is ISO9001 and ISO14001 certified, offering OEM/ODM/SKD services. With a professional production and QC team, we ensure high-quality products at competitive prices, backed by excellent service.



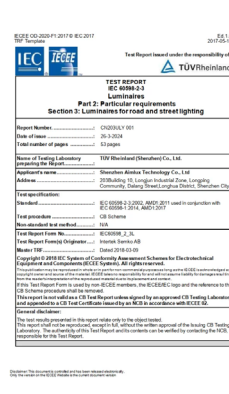
ISO 9001:2015 ISO



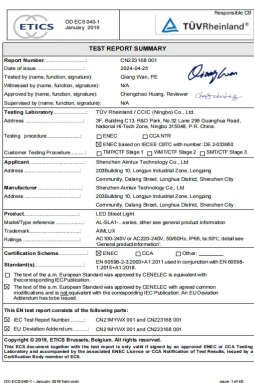
14001:2015



SGS



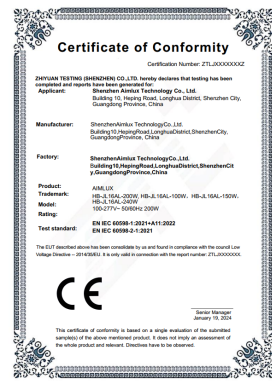
TUV-CB



ENEC



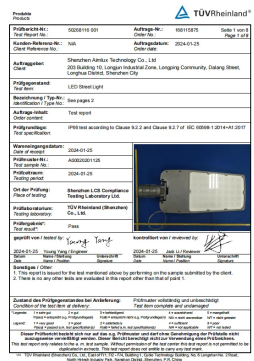
ROHS



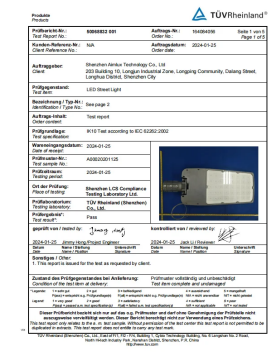
CE



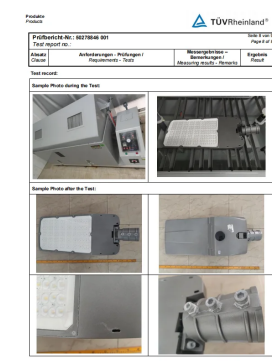
MSDS



IP-66 Test



IK-10 Test



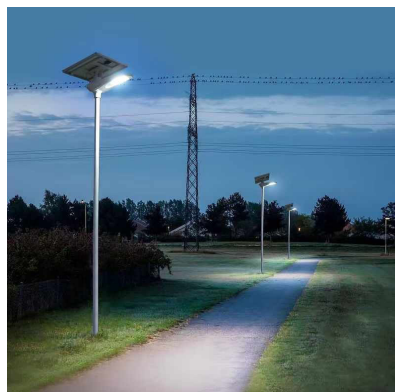
Salt-frog-test



Vibration-test



Thailand



Philippines



Brazil



Poland

Shenzhen Aimlux Technology Co., Ltd

🌐 Web: www.aimluxlighting.com

✉ Email: info@aimluxlighting.com

☎ Tel: +86 0755-29307924

Headoffice (Shenzhen)

Building 10, Longping Community,
Dalang Street, Longhua District,
Shenzhen, China

Thailand Office (Bangkok)

2198, 2206 Sukhumvit Rd, Phra
Khanong Tai, Phra Khanong,
Bangkok 10260, Thailand

Production Base (DongGuang)

No. 19, Gongye 1st Road, Hengli
Town, Dongguan City, Guangdong
Province, China